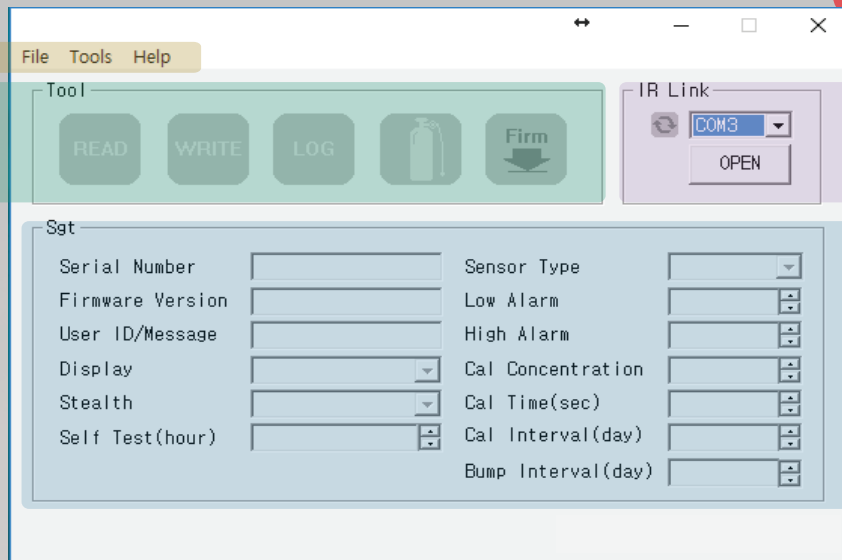


WatchGas IR link Manual

Users can change settings, upgrade firmware, download log events, and perform calibration with the WatchGas IR Link

Getting Started

To interact with WatchGas QGM or PDM, ensure to install the software and have the link cable plugged into the computer. And, place the topside of WatchGas QGM or PDM face down to the IR Link LCD.



File

- Load: Open the installed settings. (*.cfg)
- Save: Save the current settings. (*.cfg)
- Exit: Close the program.

Tools

- Calibration: Perform the zero/span calibration.
- Log Read: Retrieve the log events.
- Log Erase: Erase the log events.
- Self Test: Test if LED, LCD, Buzzer, vibration, battery and temperature work properly.
- FW Upgrade: Users can upgrade firmware.
The up to date firmware is available at the www.senko.co.kr.
- Factory Fault: Remove all data and restore the initial factory settings.
- Hibernation (Option): Extend the longevity up to 12 months.
The hibernation function is only available for **QGM and PDM** version.

Help

- About: Display a brief company profile.

Tool

- READ: Retrieve the settings.
- WRITE: Update the adjusted settings
- LOG: Display the saved log events.
- CALIBRATION: Perform the zero and span calibration.
- FIRWARE UPGRADE: Upgrade firmware.

IR Link

- OPEN: In order to interact the IR Link with **QGM and PDM**, click "OPEN". When the read is activated successfully, users will see the "Read Complete".

QGM and PDM

- Serial Number: Display a preset serial number
- Firmware Version: Display a firmware version. Ex) 1.x.x
- User ID/Message: Users can program a desired message/ID.
- Display: Users can choose to display either the real time "Sensor Reading" or "Sensor Life remaining."
- Stealth (Option): Users can turn off the buzzer, LED, and vibration.
- Self Test(Hour): Set an interval of the self-test alert.
- Sensor Type: Display a sensor type of the device.
- Low Alarm: Adjust the low alarm set point in compliance with international or local standards.
- High Alarm: Adjust the high alarm set point in compliance with the international or local standards.
- Cal Concentration: Set a standard calibration value.
- Cal Time (sec): Set a standard calibration time.
- Cal Interval (day): Set an interval of the calibration alert.
- Bump Interval (day): Set an interval of the bump test alert.