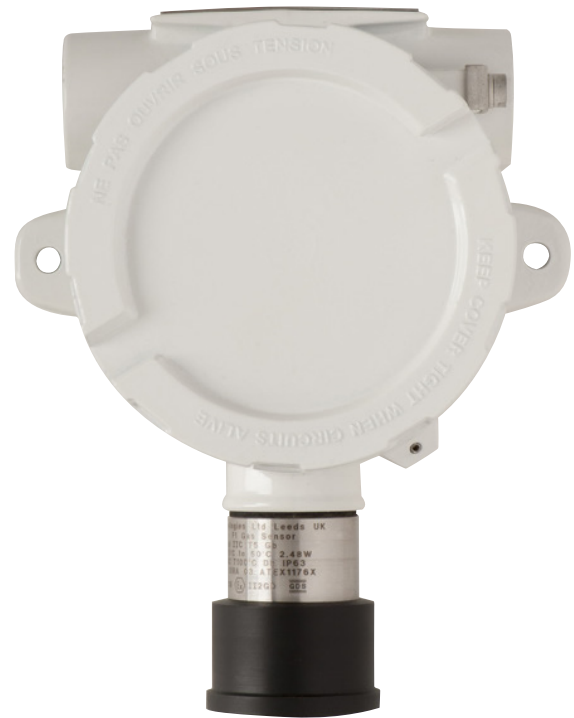


The XDI-F1 Gas Sensor is capable of utilising a wide range of sensor cell types offering an unmatched number of gases that may be monitored. Standard 4~20mA signaling with CANbus address enables the sensors to be networked via the WatchGas Combi control system or customer preferred monitoring systems.



## Key Features

- Explosion proof
- Rugged and reliable
- CANbus / 4~20mA outputs
- Addressable or stand alone
- Optional 2 alarm relays plus fault relay or 3 alarm relays
- Wide range of gas types / sensors
- Hyper terminal communications / RS232 -live data and set up with 232 adapter
- One man calibration
- Data logging

## SPECIFICATIONS

<b>Weight</b>	1.6kg
<b>Temperature</b>	-15°C to +55°C - safe area use For hazardous area use see temperature ranges on C1227 (Ex certification summary)
<b>Humidity</b>	5 to 95% RH Non-condensing
<b>Alarm Signal</b>	Acoustic: 85dB @ 10cm 1, 2, 3 and Fault Alarms - mutable Visual: Two line alpha numeric back lit display Power - Green LED Alarms 1, 2, 3 - Red LEDs Fault - Amber LED Alarms inhibit - Amber LED
<b>Housing &amp; Material</b>	Housing Material: Copper free aluminium alloy, optional stainless steel Sensor Material: Stainless steel 316S16 Finish: Chemical resistant epoxy paint / RAL 9003 signal white Optional - Marine grade finish
<b>Data Log</b>	Addressable sensors only Intervals - variable time, rollover/stop Storage - 2,880 readings
<b>Power Supply</b>	18 to 35vDC 24v nominal
<b>Outputs</b>	<ul style="list-style-type: none"> <li>• 3 wire 4~20mA / 4 wire CANbus</li> <li>• Optional relays - <ul style="list-style-type: none"> <li>• Low alarm S.P.C.O</li> <li>• High alarm S.P.C.O</li> <li>• Fault alarm S.P.C.O</li> <li>• Inhibit option during servicing Rating 0.5A @30vDC</li> </ul> </li> </ul>
<b>Cable Entry</b>	2 x M20 - 1.5 pitch - alternatives 25mm - 3/4 NPT
<b>IP Rating</b>	IP64 + water shield IP65 with hydrophobic screen IP66
<b>EMC</b>	EN 50270
<b>Safety Certification</b>	Explosion proof ATEX IECEx 112G Exd IIC T6-T4 Gb 112D Extb IIIC T85°C -T135°C Db
<b>Sensor Type</b>	Infra Red, Electrochemical, Catalytic, Semiconductor, PID
<b>Gas Type / Range</b>	Flammable gases - LEL / %Vol Toxic gases - ppm/ppb Oxygen %vol
<b>Accessories</b>	Collector Cone & Universal Fitting Universal fitting (Test Gas Applicator/Spray Deflector) Water Shield - stainless steel Flow Block - nylatron Flow Block - stainless steel Duct Mount Kit Detector Head Weather Shield F1 Sensor Thermal Jacket

## AVAILABLE GASES

Gases	Measuring Range
Flammable Gases (LEL)	0~100% LEL Catalytic Hydrocarbons, NH <sub>3</sub> , H <sub>2</sub>
	0~100% LEL Catalytic Hydrocarbons
	0~100% LEL Catalytic Kerosene
O <sub>2</sub> Oxygen	0~25% Vol Electrochemical
CO Carbon Monoxide	0~200ppm Electrochemical
H <sub>2</sub> S Hydrogen Sulfide	0~50ppm Electrochemical
SO <sub>2</sub> Sulfur Dioxide	0~5ppm Electrochemical
NO <sub>2</sub> Nitrogen Dioxide	0~5ppm Electrochemical
PH <sub>3</sub> Phosphine	0~10ppm Electrochemical
H <sub>2</sub> Hydrogen	0~2000ppm Electrochemical
Cl <sub>2</sub> Chlorine	0~10ppm Electrochemical
HCN Hydrogen Cyanide	0~10ppm Electrochemical
NO Nitric Oxide	0~10ppm Electrochemical
HCl Hydrogen Chloride	0~10ppm Electrochemical
O <sub>3</sub> Ozone	0~1ppm Electrochemical
NH <sub>3</sub> Ammonia	0~100ppm Electrochemical
	0~1000ppm Electrochemical
	0~5000ppm Electrochemical
ETO Ethylene Oxide	0~25ppm Electrochemical
ClO <sub>2</sub> Chlorine Dioxide	0~1ppm Electrochemical
HF Hydrogen Fluoride	0~10ppm Electrochemical
H <sub>2</sub> O <sub>2</sub> Hydrogen Peroxide	0~100ppm Electrochemical
Refrigerant Gases	0~1000ppm Semiconductor
VOC PID 10.6 eV Range	0~1000ppm
IR Flammable	Hydrocarbon 0~100% LEL / 0~100 %vol.
IR CO <sub>2</sub>	CO <sub>2</sub> 0~5000 ppm / 0~2 %vol.(Standard) / 0~10 %vol. (Max Range)
	CO <sub>2</sub> 0~100 %vol.
Formaldehyde	0 - 10 ppm

